

### Speed shop - Engine Tuning - Chassis Dyno - Turbos - Super Chargers - Programming



**CBM COIL COVER KIT**  
C6 Corvette LS7 coil cover kit chrome plated.



**ECOTEC ADAPTER AND CLUTCH KIT**

Complete Ecotec clutch, pressure plate, flywheel, adapter plate and all necessary hardware.



**CBM ECOTEC FUEL RAIL ADAPTERS**

For stock GM Ecotec style fuel rails. Adapts the factory inlet and return fittings to -6AN fittings.



**CALLIES ULTRA CONNECTING RODS**

LS based sb chevy 6.125.



**CBM BILLET POWER STEERING BRACKET KIT**

This kit is designed for the 2.2L L61 and the 2.4L LE5 Ecotec models. Runs with the factory GM alternator.



**MANLEY RACE SERIES VALVES**  
LS1/LS2 (LS6 HEAD).



**CBM BILLET A/C BRACKET KIT**

F-body style, high mount bolt on.



**CBM BILLET ECOTEC 2.2L 2.4L OIL PRESSURE ADAPTER**

Used with a factory GM style sender for oil pressure.



**GIBSON LS STYLE HEADER & MUFFLER**



**POWER STEERING BRACKET**

F-body style, bolts in place of the factory unit.



**MANLEY PLATINUM SERIES PISTONS**

LS-1/LS-2/LS-6, LS3/L-92, LS-7 stock 4.100" stroke.



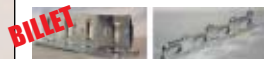
**CBM BILLET OIL FILTER ADAPTER**

Custom oil filter adapter for all Ecotec style engines (2.0L, 2.2L, 2.4L, L61, LE5,) 10 AN.



**CBM LS STYLE COIL RELOCATION BRACKETS**

Designed to hold stock LS2, LS3, LS7, LSX coils.



**INTAKE/EXHAUST FLANGES**



**CBM BILLET ECOTEC WATER NECK BLOCK**

2.0L, 2.2L, 2.4L, L61, LE5, LSJ, LNF.



**CBM BILLET ALTERNATOR BRACKET**

Custom alternator bracket for LS style engines. Accepts factory and most aftermarket alternators.



**CHEVROLET LS CLUTCH KIT**

Complete LS style (LS1, LS2, LS3, LS6, LS7, LS9, LSX) clutch, pressure plate, flywheel, adapter plate.



**CBM ECOTEC HEADER w/ MUFFLER**

Designed to fit most rear engine sand cars. Ceramic coated.



**JE/SRP ECOTEC L61 FORGED PISTONS**

GM 2.2L Ecotec with a std. or 0.010" bore. Set of 4 pistons, new rings and wrist pins.



**MANLEY PRO SERIES CRANKSHAFTS**

Specifically designed for the Chevrolet LS1/LS6 4.100 stroke 58 tooth.



**CBM BILLET INTAKE ADAPTER**

Intake manifold adapter for 2.4L Ecotec. Allows use of a 2.2L drive by cable throttle body used with a 2.4 LE5 intake manifold.

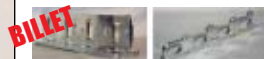
## WIRING HARNESS'S

	CBM L61 2.2L Ecotec complete wiring harness
	GM LE5 2.4L Ecotec complete wiring harness MEFI 5
	CBM LS 24x/58x manual trans complete wiring harness MEFI
	GM LS 24x/58x manual trans complete wiring harness OEM
	CBM LNF 2.0L Ecotec turbo charged complete wiring harness
	CBM LST 2.0L Ecotec super charged complete wiring harness
	Complete custom wiring harness's to your specs
	Call for more applications <small>short star, north star, new star, vortech, 4L60E and more.</small>



**CBM LS STYLE COIL RELOCATION BRACKETS**

Designed to hold stock LS2, LS3, LS7, LSX coils.



**INTAKE/EXHAUST FLANGES**



**CBM ECOTEC HEADER w/ MUFFLER**

Designed to fit most rear engine sand cars. Ceramic coated.

**\*FREE CBM T-SHIRT WITH ORDERS OVER \$200.00**



\*ONE SHIRT PER CUSTOMER

Ask about our dealer pricing.

[www.CBMmotorsports.com](http://www.CBMmotorsports.com)

Ask about our dealer pricing.

**CBM 454 Super Charged Warhawk**  
call for details

Engine packages starting at \$7.399  
LS1, LS2, LS3, LS6, LS7, LSX, Northstar, Shortstar, Ecotec, BBC, SBC, Super charged, Twin turbo charged  
call for details  
**1100 rwhp**

CBM Motorsports  
9252 Hyssop Dr  
Rancho Cucamonga, Ca 91730  
(909) 291-7550